



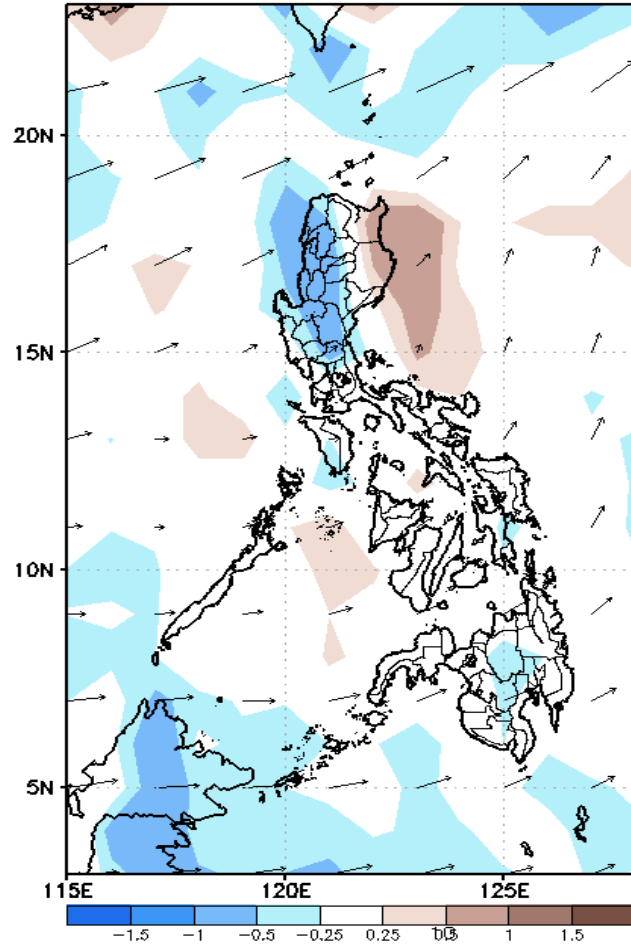
Week 1 & Week 2 Forecast for the Philippines using GEFS Model



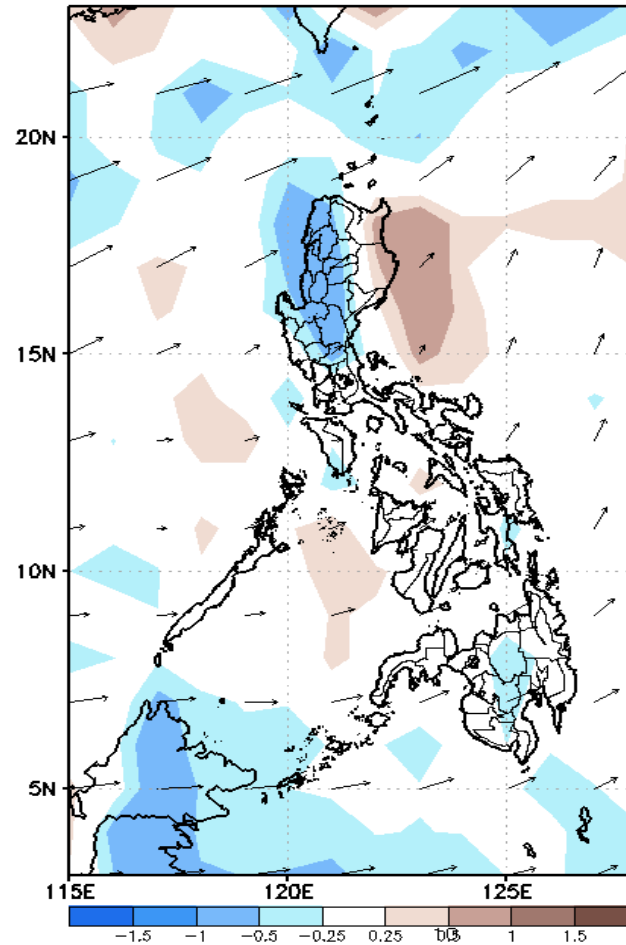
GEFS Week-1 Forecasts: Divergence & Wind Anomaly

Week 1: January 14-20, 2021

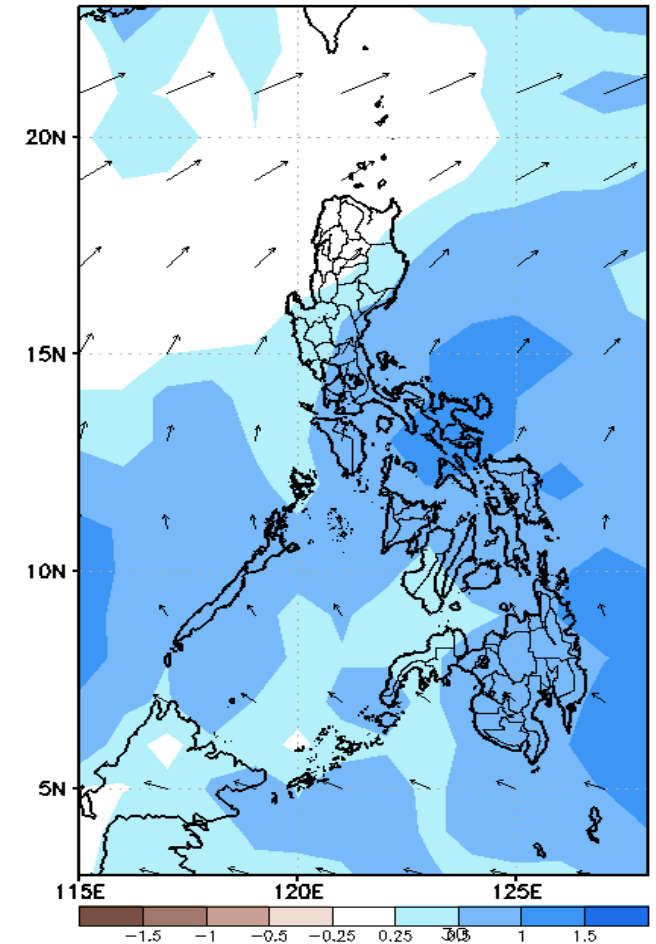
GEFS Week-1 850-hPa Divergence and Wind Anom
Valid: 20210114 - 20210120



GEFS Week-1 700-hPa Divergence and Wind Anom
Valid: 20210114 - 20210120



GEFS Week-1 200-hPa Divergence and Wind Anom
Valid: 20210114 - 20210120

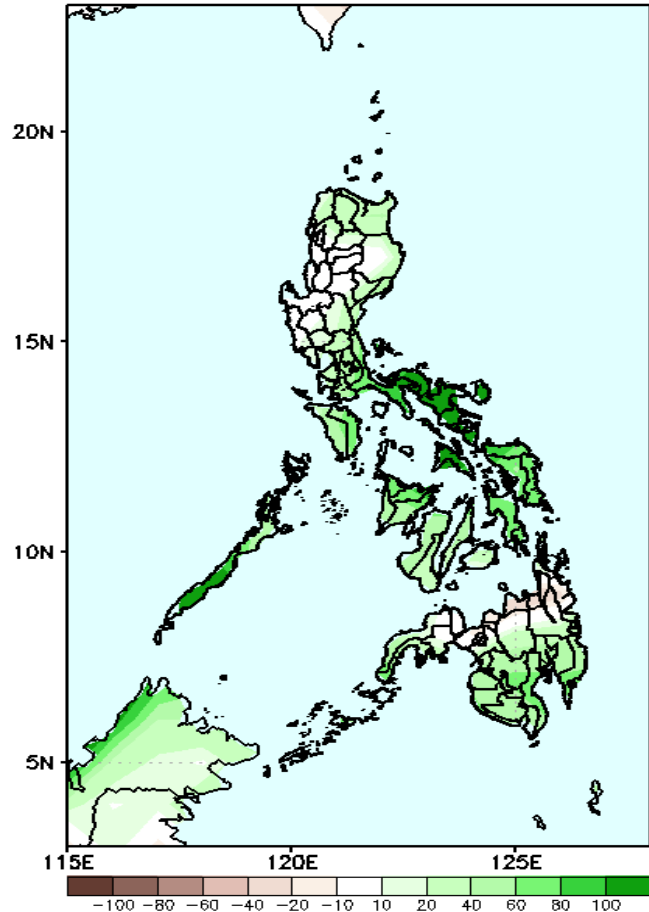


Upper and low level Divergence suggest likelihood of precipitation in most parts of the. Northeast Monsoon affecting most parts of Luzon while Easterlies affecting eastern sections of Visayas and Mindanao during the forecast period.

Precipitation Anomaly and Exceedance Probability > 25/50 mm

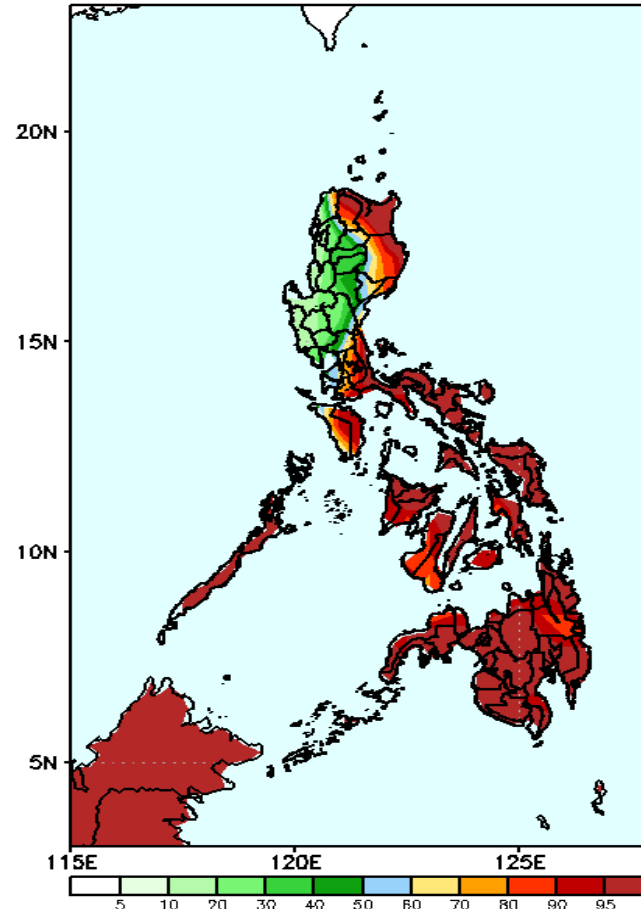
Week 1: January 14-20, 2021

GEFS Week-1 Precip Anomaly
Valid: 20210114 - 20210120



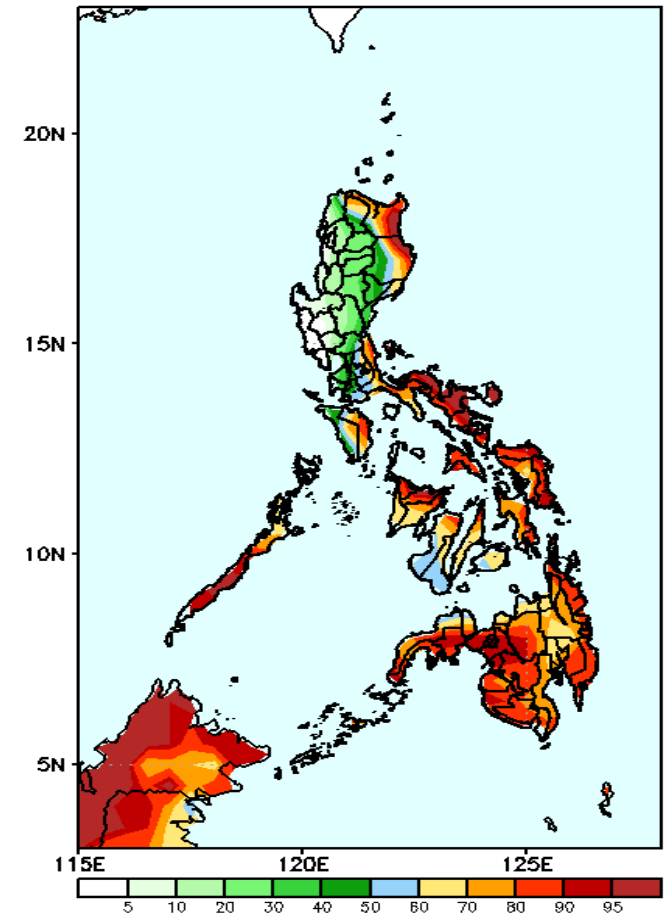
Increase of rainfall of up to 60mm is expected in northern and eastern Luzon and southern Mindanao while up to 100mm in Bicol Region and most parts of Visayas.

GEFS Week-1 Exceedance Prob. > 25mm
Valid: 20210114 - 20210120



High probability of rainfall to exceed 25mm in Apayao, Cagayan, Isabela, Southern Luzon and most parts of Visayas and Mindanao during the forecast period.

GEFS Week-1 Exceedance Prob. > 50mm
Valid: 20210114 - 20210120

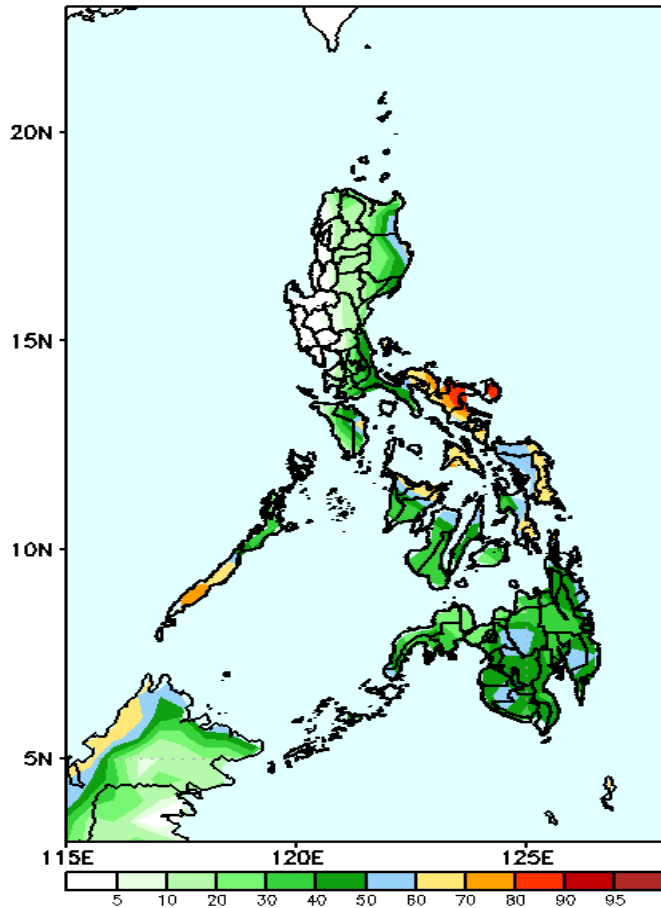


High probability of rainfall to exceed 50mm in Apayao, Cagayan, Isabela, Southern Luzon and most parts of Visayas and Mindanao during the forecast period.

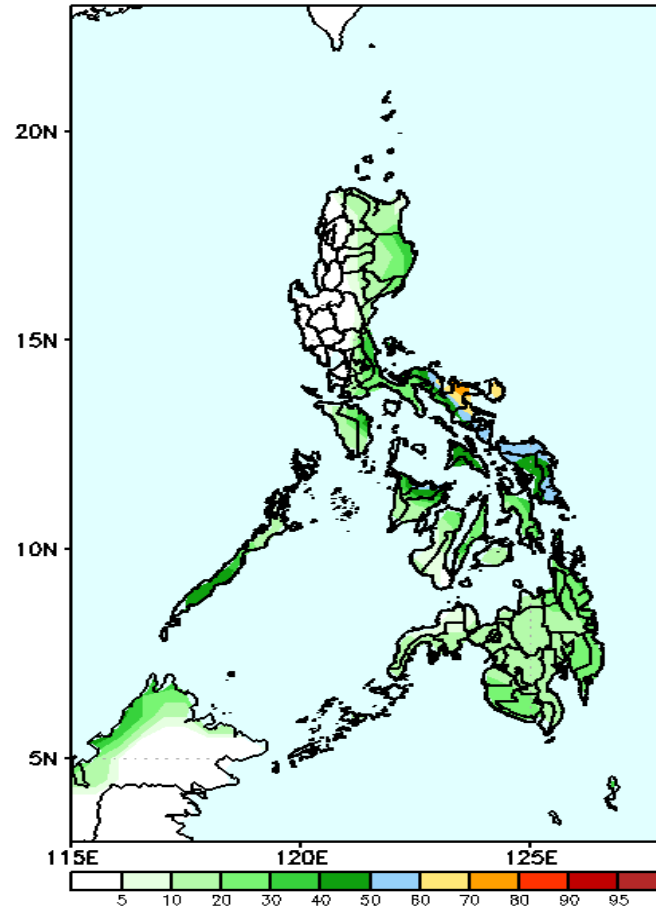
Exceedance Probability > 100/150/200 mm

Week 1: January 14-20, 2021

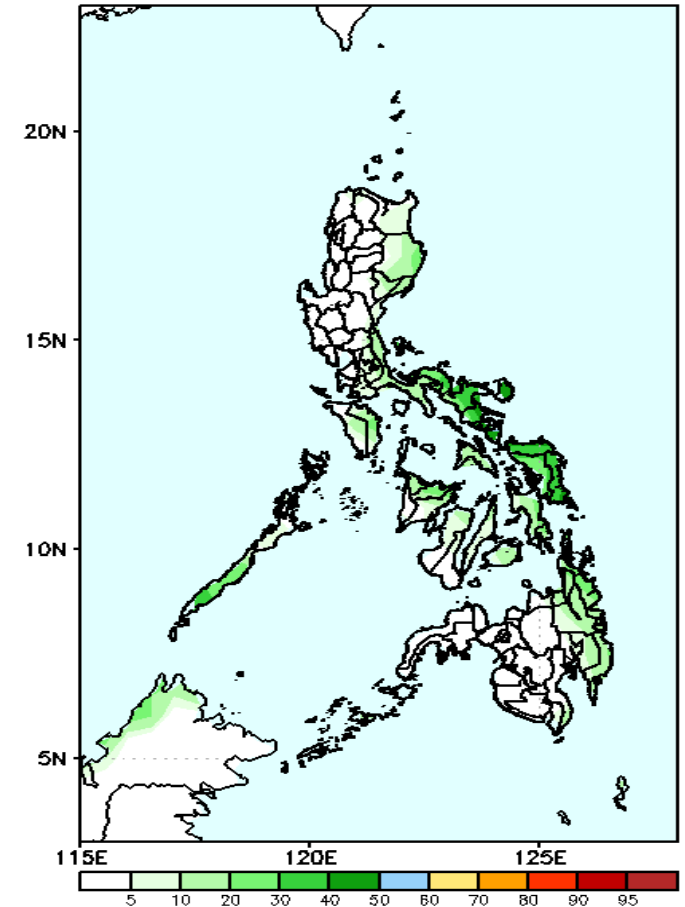
GEFS Week-1 Exceedance Prob. > 100mm
Valid: 20210114 - 20210120



GEFS Week-1 Exceedance Prob. > 150r
Valid: 20210114 - 20210120



GEFS Week-1 Exceedance Prob. > 200mm
Valid: 20210114 - 20210120



Less probability of rainfall to exceed 100mm in most parts of the country except in Bicol Region, Eastern Samar and Masbate where there is 70-95% probability during the forecast period.

Less probability of rainfall to exceed 150mm in most parts of the country during the forecast period.

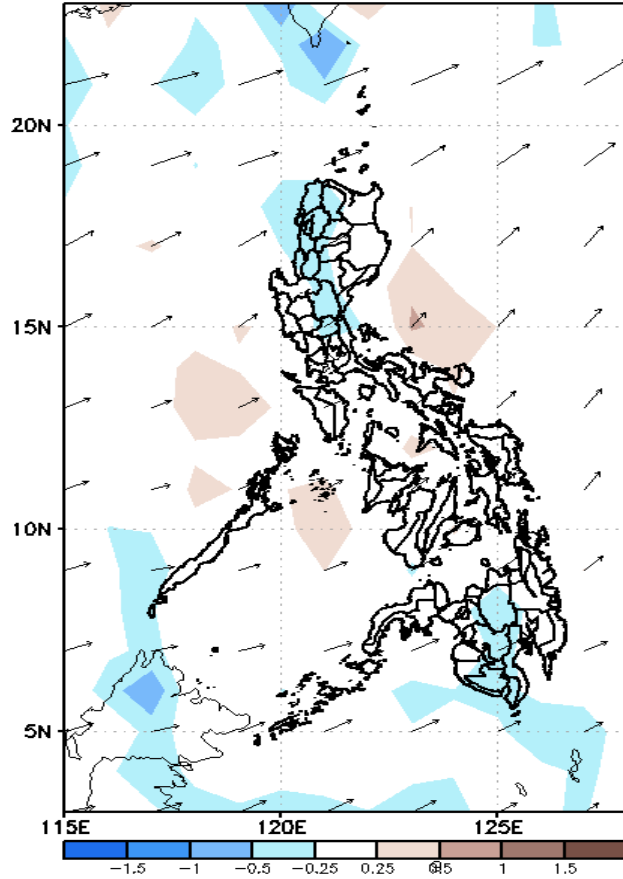
Less probability of rainfall to exceed 200mm in most parts of the country during the forecast period.



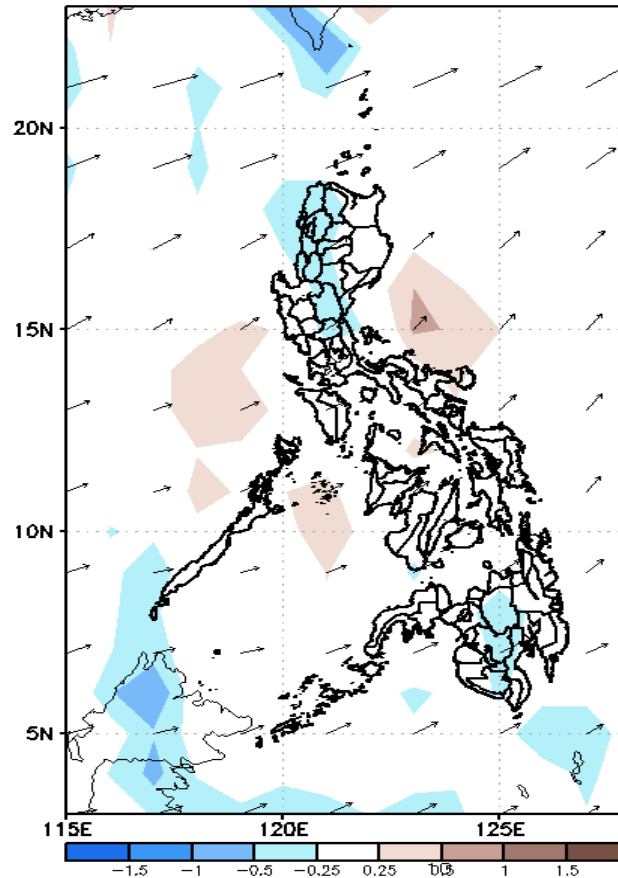
GEFS Week-2 Forecasts: Divergence & Wind Anomaly

Week 2: January 21-27, 2021

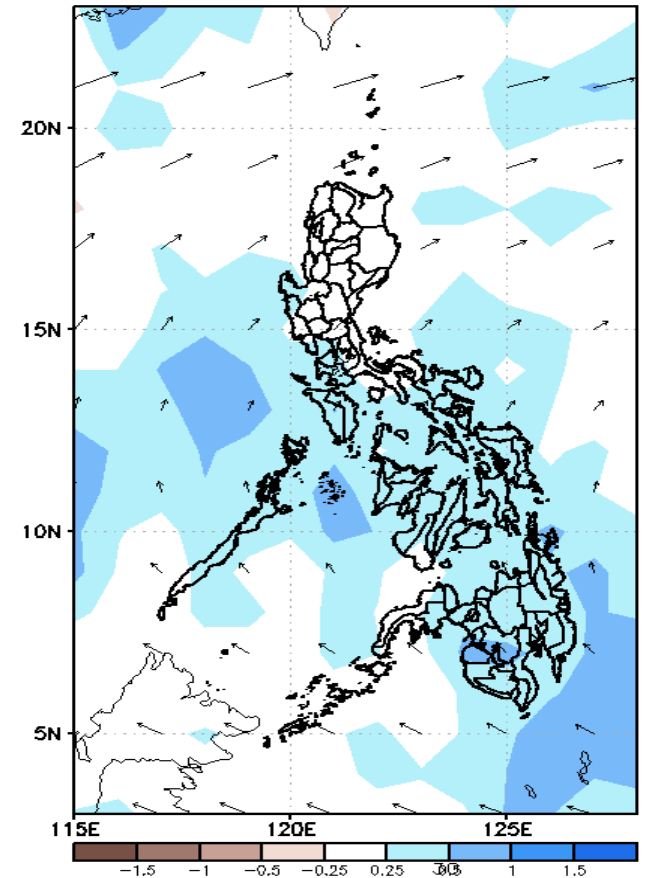
GEFS Week-2 850-hPa Divergence and Wind Anom
Valid: 20210121 - 20210127



GEFS Week-2 700-hPa Divergence and Wind Anom
Valid: 20210121 - 20210127



GEFS week-2 200-hPa Divergence and Wind Anom
Valid: 20210121 - 20210127

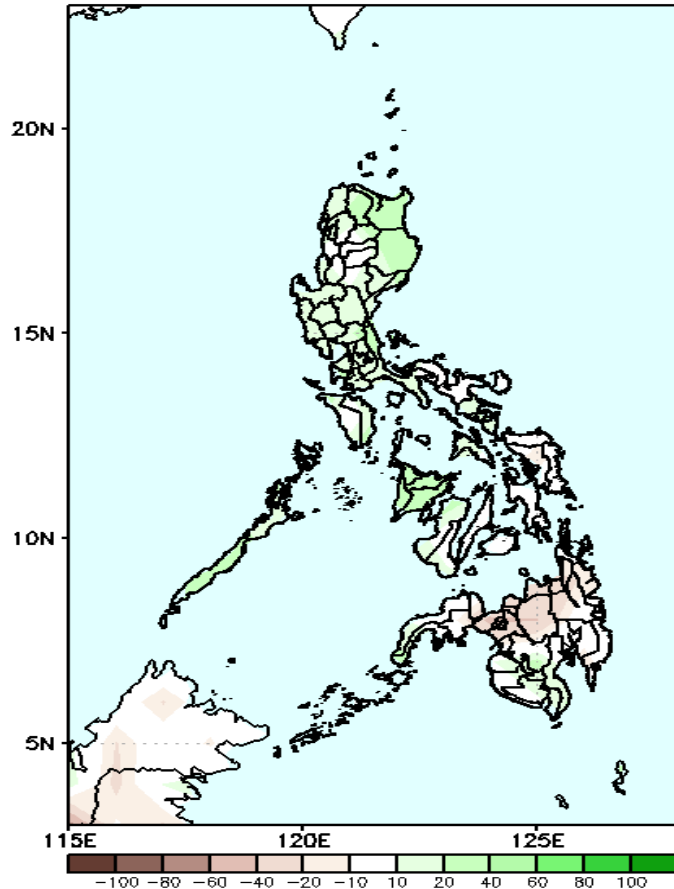


Upper and low level Divergence suggest likelihood of precipitation in most parts of CAR, Ilocos region, Nueva Ecija, Bulacan, Cavite, Laguna, Batangas, and most parts of Visayas and Mindanao. Northeast Monsoon affecting most parts of Extreme Northern and Northern Luzon while Easterlies affecting Visayas and Mindanao during the forecast period.

Precipitation Anomaly and Exceedance Probability > 25/50 mm

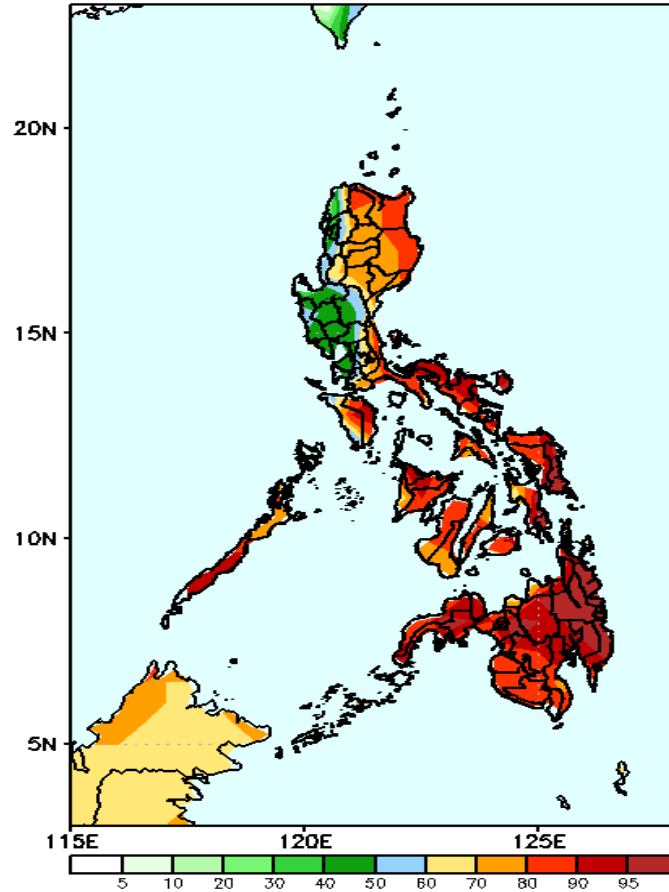
Week 2: January 21-27, 2021

GEFS Week-2 Precip Anomaly
Valid: 20210121 - 20210127



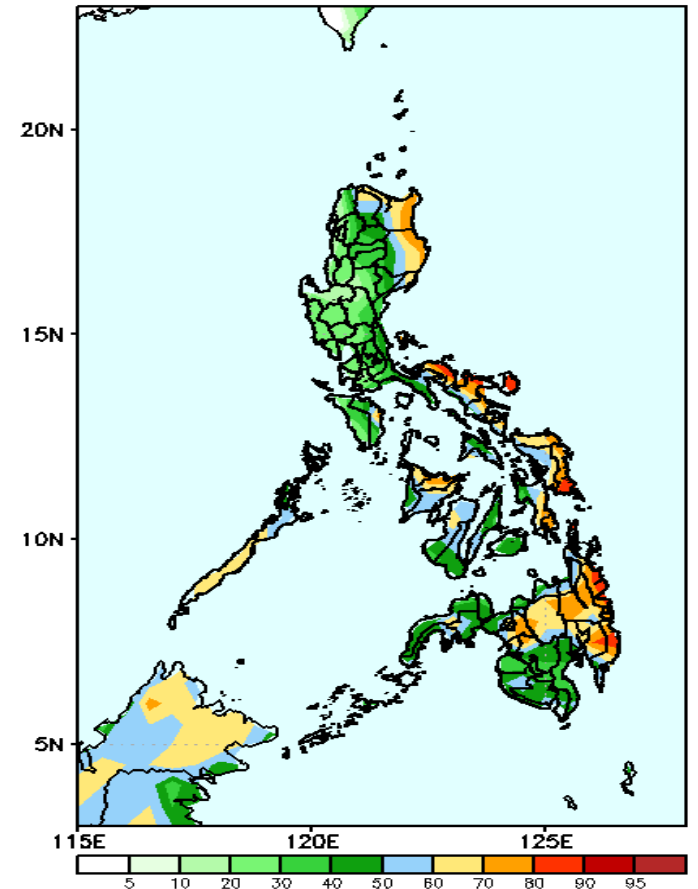
Increase of rainfall of up to 60mm is expected in northeastern Luzon and Panay Island while rainfall deficit of up to 40mm in northern Mindanao during the forecast period

GEFS Week-2 Exceedance Prob. > 25mm
Valid: 20210121 - 20210127



High probability of rainfall to exceed 25mm in most parts of the country except in Ilocos Region & Central Luzon during the forecast period.

GEFS Week-2 Exceedance Prob. > 50mm
Valid: 20210121 - 20210127

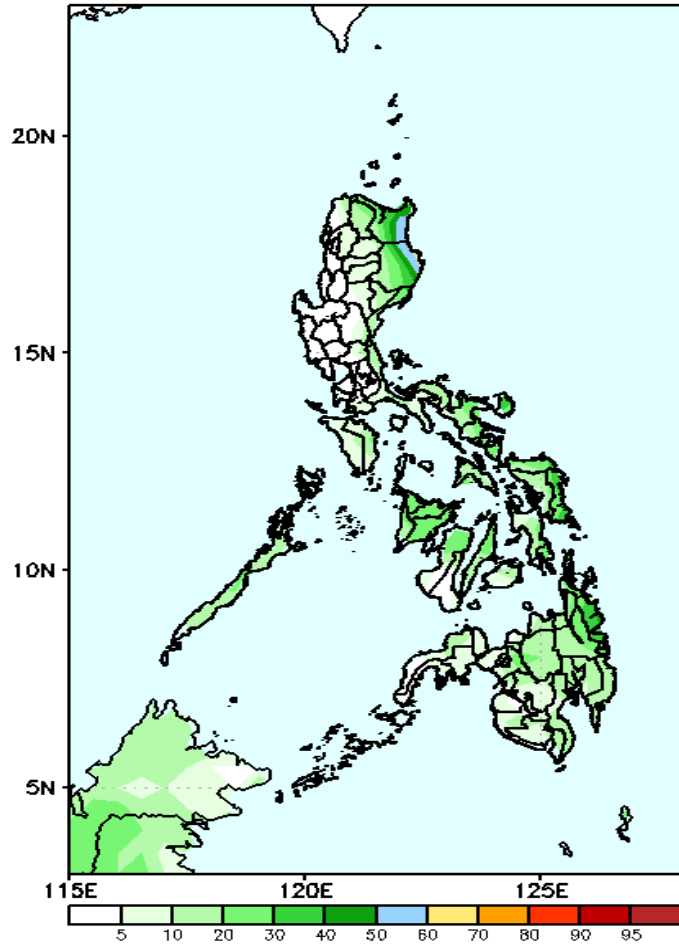


60-95% probability of rainfall to exceed 50mm in Apayao, Cagayan, Isabela, southern Palawan, Bicol Region, eastern and western Visayas and northern & eastern parts Mindanao during the forecast period.

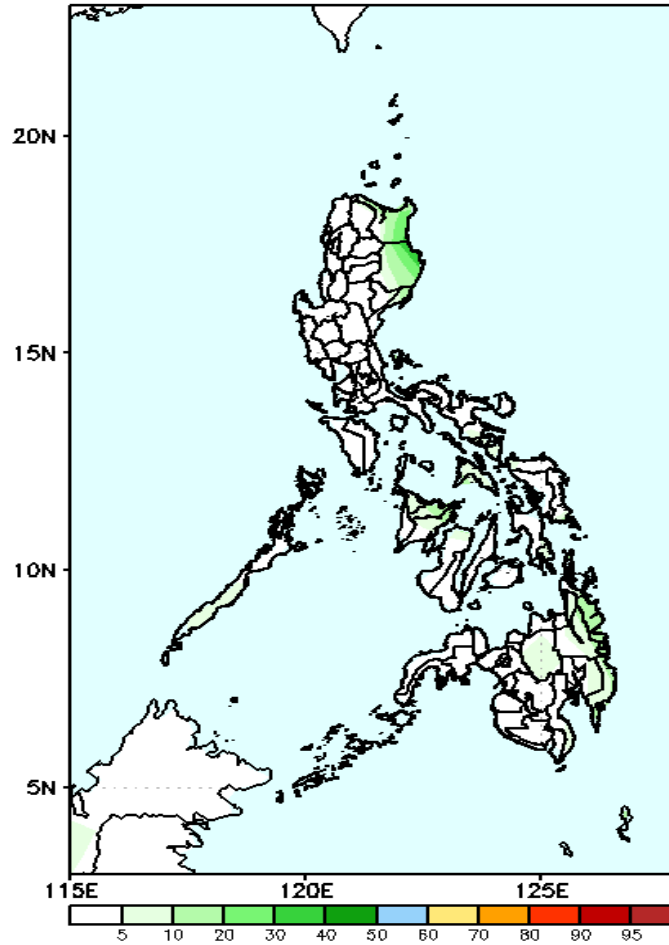
Exceedance Probability > 100/150/200 mm

Week 2: January 21-27, 2021

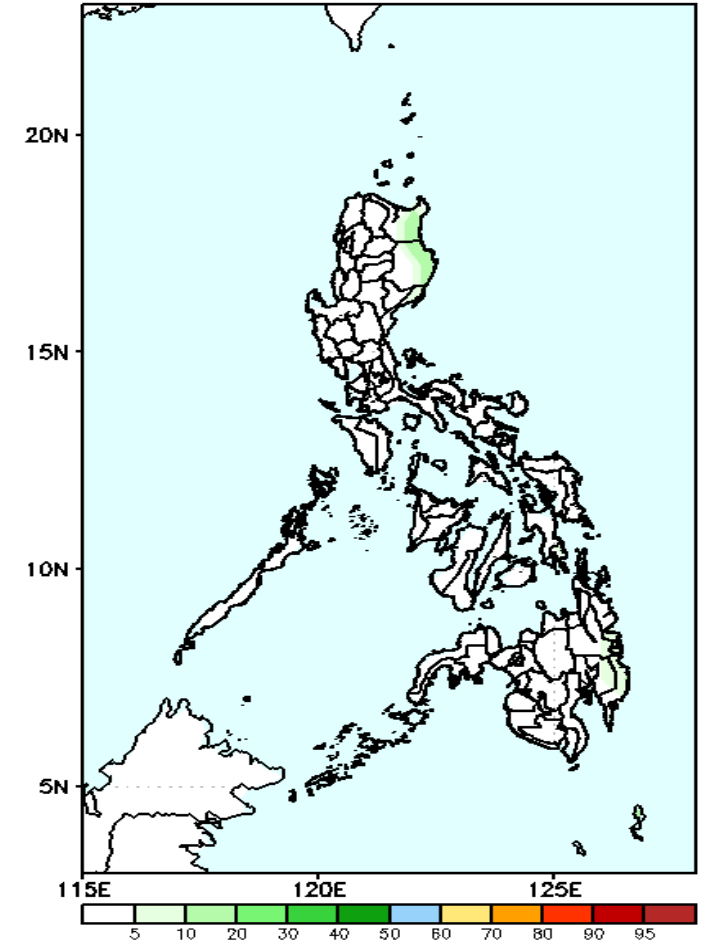
GEFS Week-2 Exceedance Prob. > 100mm
Valid: 20210121 - 20210127



GEFS Week-2 Exceedance Prob. > 150mm
Valid: 20210121 - 20210127



GEFS Week-2 Exceedance Prob. > 200mm
Valid: 20210121 - 20210127



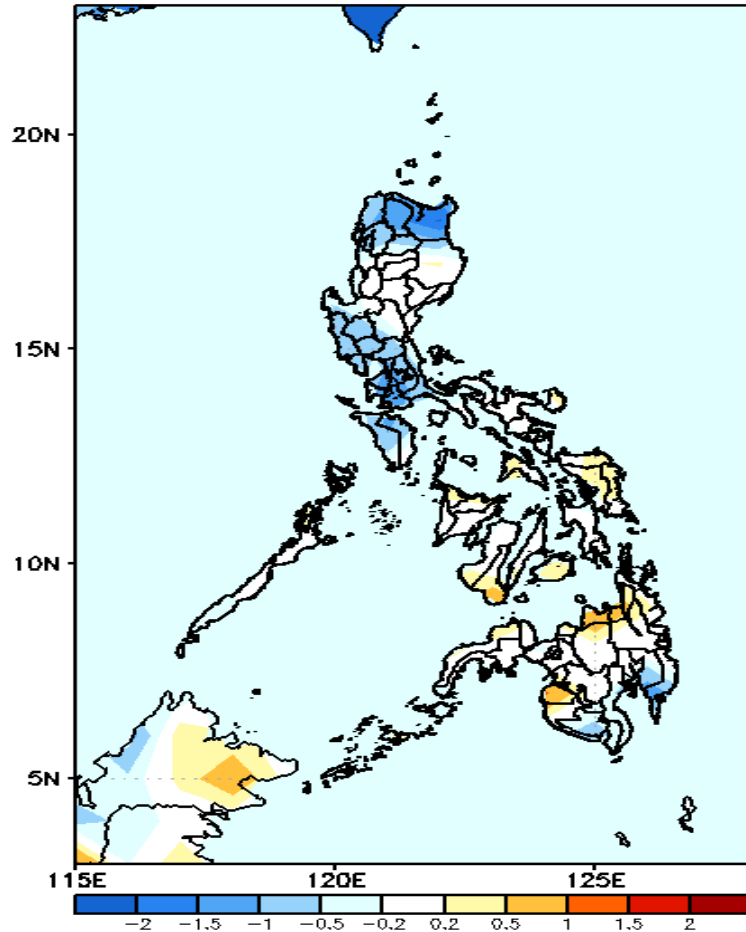
Less probability of rainfall to exceed 100mm in most parts of the country during the forecast period.

Less probability of rainfall to exceed 150mm in most parts of the country during the forecast period.

Less probability of rainfall to exceed 200mm in most parts of the country during the forecast period.

GEFS Week-1 & 2 Forecasts: T2m Anomaly

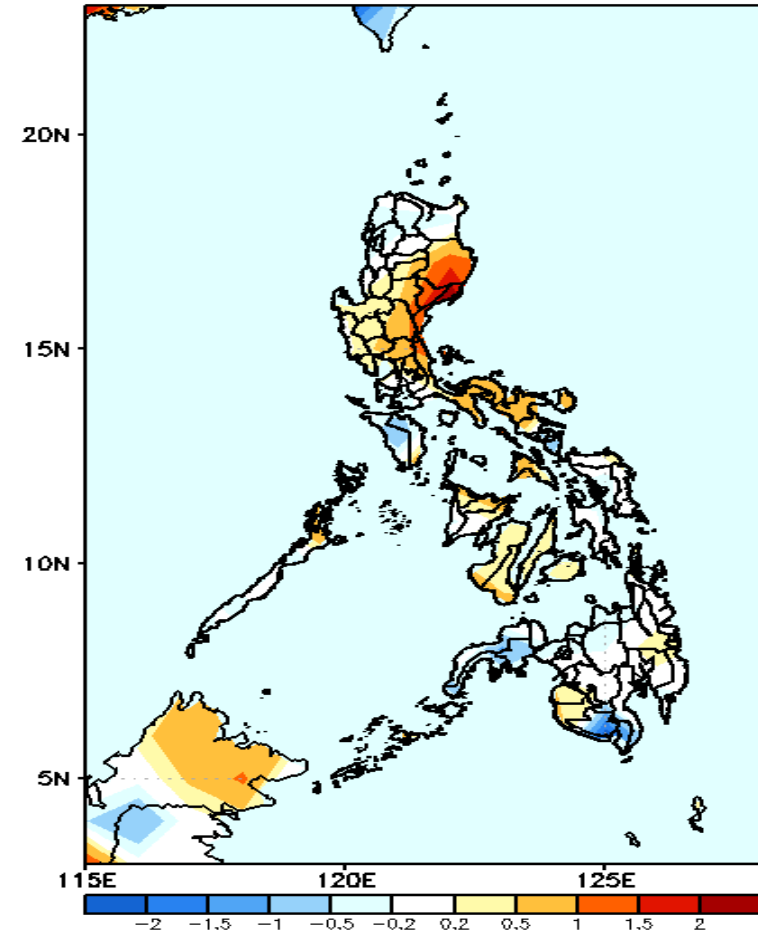
GEFS Week-1 T2m Anomaly
Valid: 20210114 - 20210120



2m Temperature Week 1: January 14-20, 2021

Cooler than average surface air temperature is expected in Northern & Central Luzon. Southern Luzon. And southern while the rest of the country will likely experience average to slightly warmer than average surface air temperature.

GEFS Week-2 T2m Anomaly
Valid: 20210121 - 20210127



2m Temperature Week 2: January 21-27, 2021

Slightly warmer to warmer than average surface air temperature is expected in eastern & Southern Luzon while average to slight warmer than average in most parts of Visayas and Mindanao.

